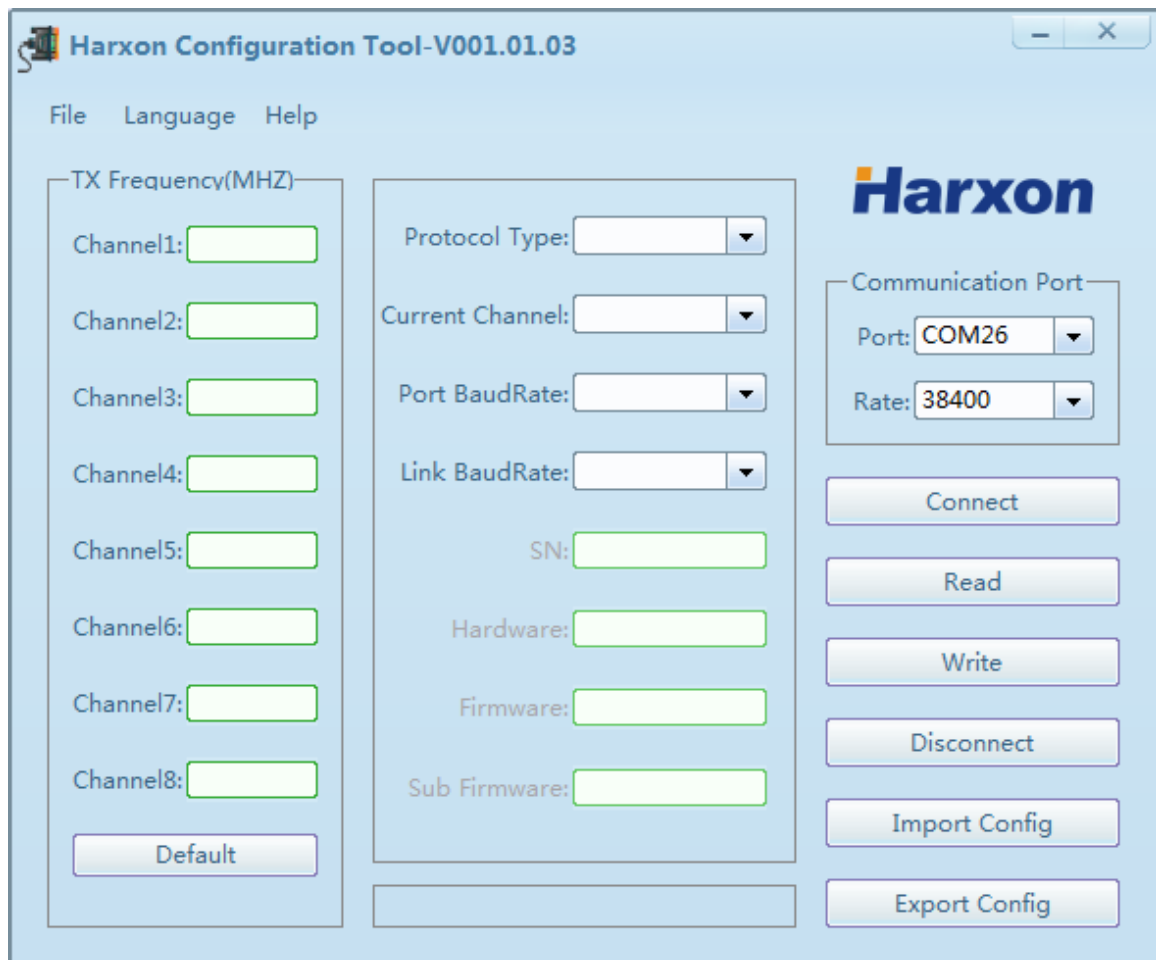



PDR-450 Configuration manual

Interface



Operation

1. Connect
Set your serial port and baud rate 38400, click "Connect" within 3 seconds after power on. If LED on front panel shows , you get connected successful. Then you can read or make changes on your radio.
2. Read
Read current configuration of your radio.
3. Write
Save all changes.
4. Disconnect
If click "Disconnect", it will exit programming mode and display will show channel number.
5. Import config
You can import previous saved config files.
6. Export config
You can save your configuration to a file.

END.